

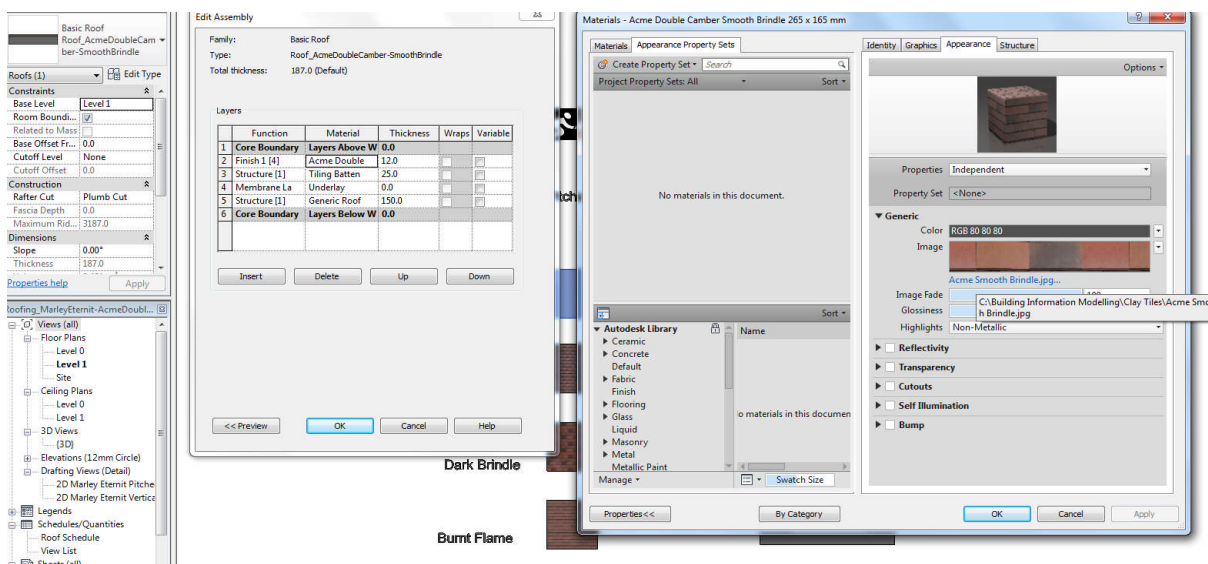
Marley Ltd BIM Guidance

This document contains information on how to use the Marley Ltd Revit model files to their full potential.

BIM Object

The layered BIM Objects are split into roof material definitions for each individual tile colour and type.

To maintain the texture of Marley Ltd products, swatches are included within the file. To link the swatch select **'Edit Type'** under properties, then select **'Edit'** under structure, this will take you to the roof assembly / build up. To link the swatch; select the **'Finish'** or tile then under the **'Appearance'** tab you will have the ability to re-link the photo. *See below;*



To place a specific BIM Object, the simplest way is to copy and paste into your project. This will take all information on the product across and place it within the project model. When selecting the object, go to **'Edit Type'**, all the parameters will be transferred into the project space as material definitions.

For any additional support or to provide feedback call our Technical Advisory Service on 01283 722588 or email us at info@marley.co.uk.