



▲ Tilefix    ▲ Specrite

▲ Estimator    ▲ BIM

Visit [marley.co.uk/technical-services](http://marley.co.uk/technical-services) for a full suite of online tools to help with your roof design, specification and fixing.

Feel free to talk to our experts at any time on 01283 722588.

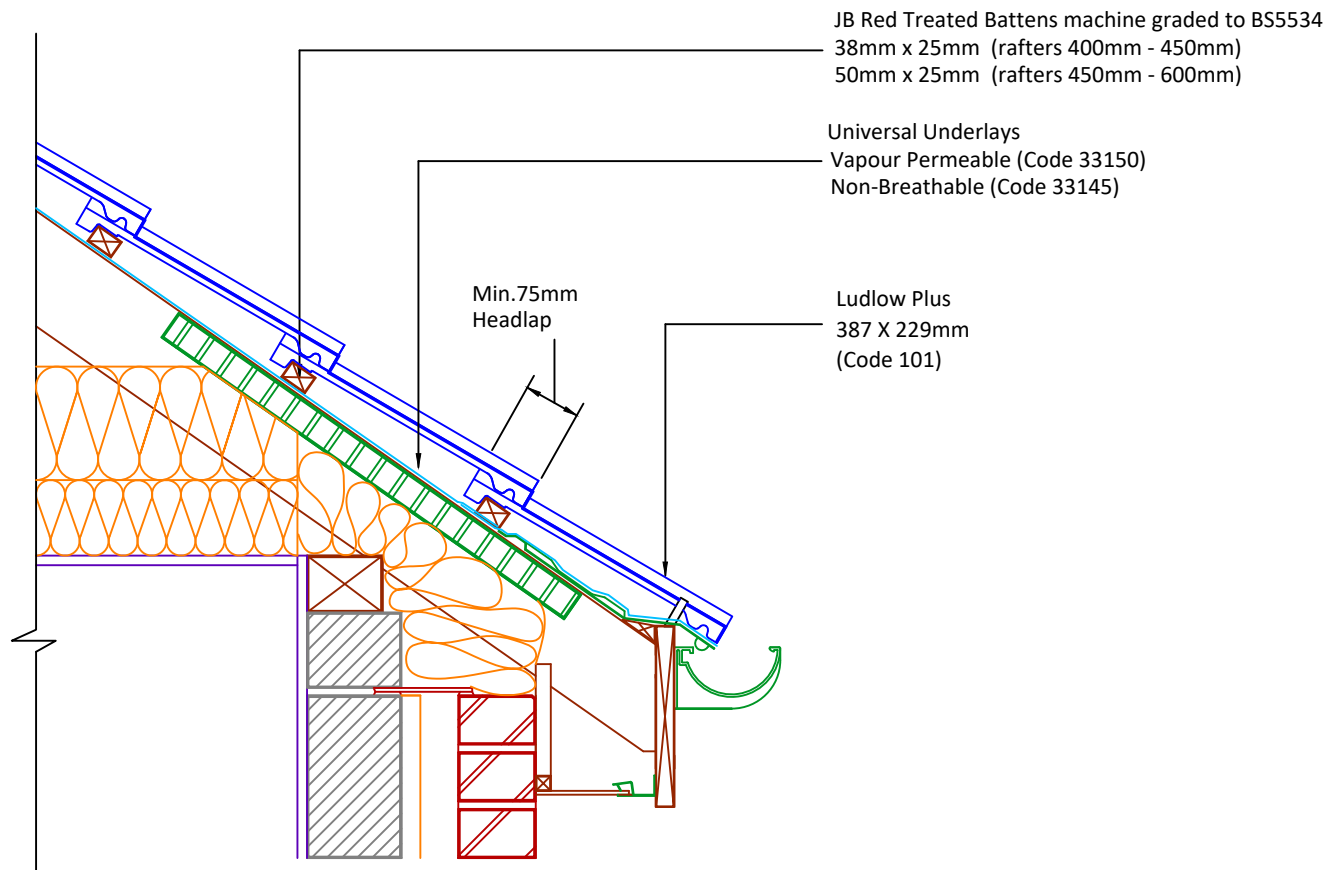
Associated products & fixings

Ludlow Plus Aluminium Nail Pack  
Code 30350 (500g)

Ludlow Plus SoloFix Tile Clips  
Code 30440 (100 Pack)  
Code 30430 (500 Pack)

Ludlow Plus Eave Clip & Nail Packs  
Code 30277 (100 No)

Continuous Rafter Roll (2x6 metre)  
(Available for purchase separately)  
Code 46323



JB Red Treated Battens machine graded to BS5534  
38mm x 25mm (rafters 400mm - 450mm)  
50mm x 25mm (rafters 450mm - 600mm)

Universal Underlays  
Vapour Permeable (Code 33150)  
Non-Breathable (Code 33145)

Ludlow Plus  
387 X 229mm  
(Code 101)

Min. 75mm  
Headlap

DRAWING NUMBER  
35810135

DRAWING REVISION  
A

DRAWING TITLE

Soffit Ventilated Eaves 10mm - Cold Roof

SCALE

1:10

Ludlow  
Plus

