

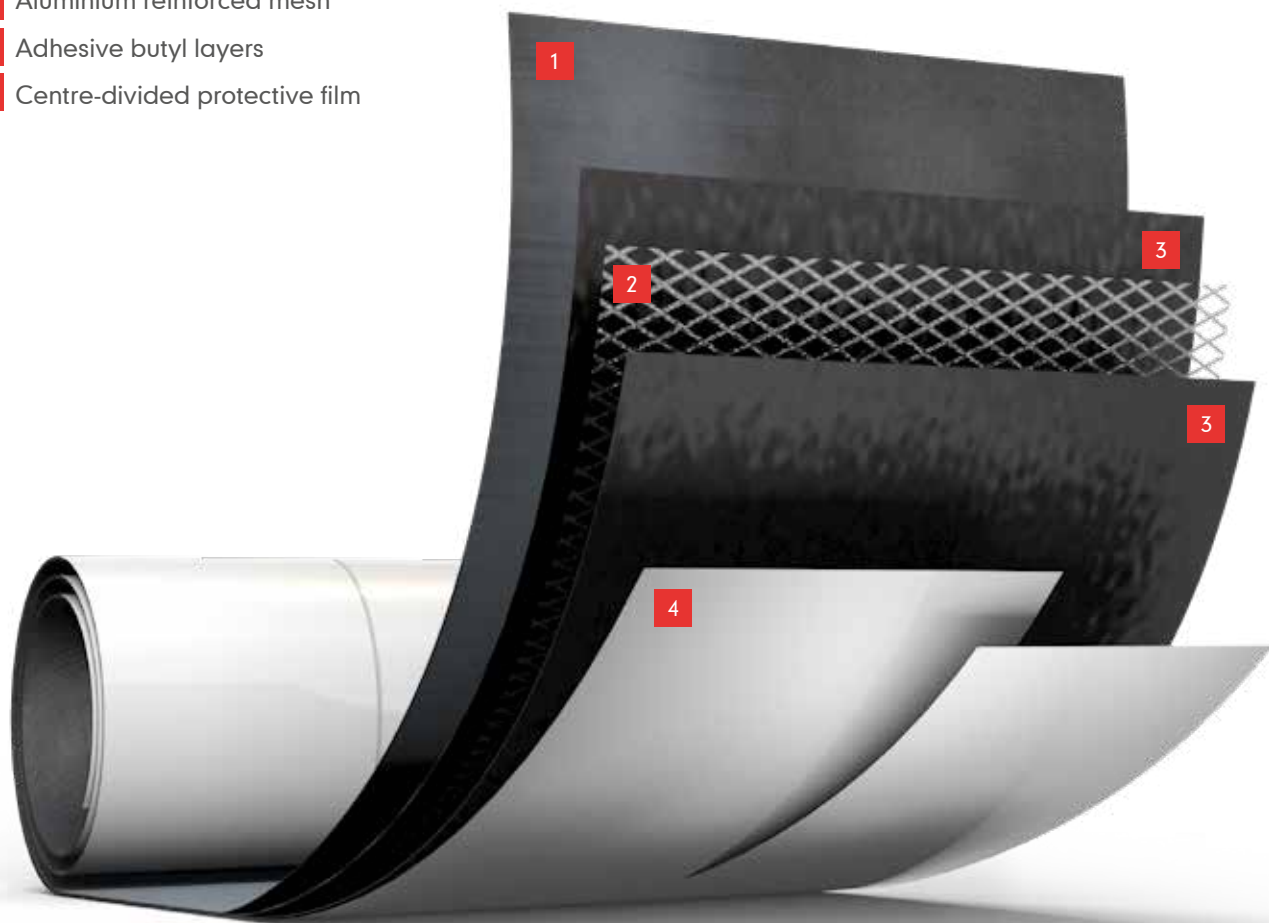


FlexFast Lead Replacement Roll

TECHNICAL SPECIFICATION

Flexfast is a high performance four layer aluminium flashing roll, with excellent adhesion, flexibility and durability making it an ideal replacement to lead for all your pitched roofing applications.

- 1 Textured UV-resistant aluminium sheet
- 2 Aluminium reinforced mesh
- 3 Adhesive butyl layers
- 4 Centre-divided protective film

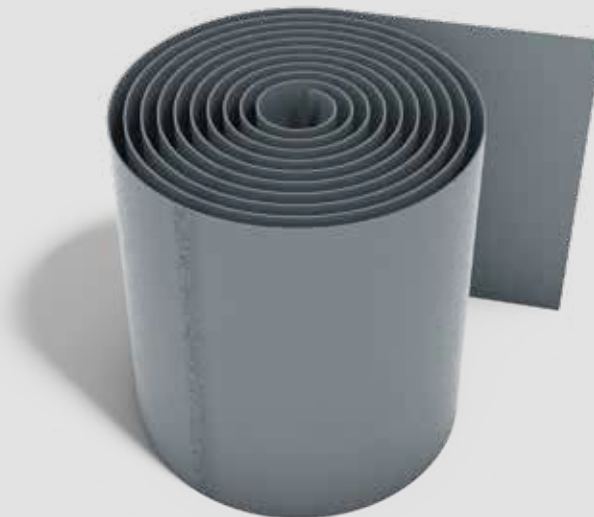


FLEXFAST LEAD REPLACEMENT ROLL

TECHNICAL SPECIFICATION

ADVANTAGES

- ▲ Cost-effective when compared with lead
- ▲ No likelihood of theft
- ▲ Lighter and easier to use than lead
- ▲ No need for specialist lead installers
- ▲ Flexible and stretchable, up to 60% elasticity
- ▲ Strong, adhesive butyl backing



The material offers ease of installation with up to 60% flexibility, a highly adhesive butyl that bonds permanently to a wide variety of roof coverings. It is very malleable and easy to form with increased strength due to a reinforced aluminium mesh.

This cost-effective lightweight, environmentally friendly alternative to lead has no scrap or resale value so offers no temptation to thieves. The best materials and processes have been used in the manufacturing of this product, flexfast is highly UV resistant. It is truly a product for professionals – without any compromises, ensuring a faster and easier installation, superior peace of mind.

QUICK AND EASY INSTALLATION

Flexfast has been designed to be easier and quicker to install than lead yet still achieves a professional finish that will last for years.

- ▲ Can be cut easily with a knife or snips
- ▲ No special tools are required
- ▲ Moulds to contours of the roof and walls with just your hands for a permanent watertight flashing

TECHNICAL DATA

Length	5m rolls
Width	300mm, 450mm
Weight	300mm – 3.3kg per roll 450mm – 6.4kg per roll
Colour	Umbra Grey RAL 7022
Surface finish	Texture crepped aluminium sheet
Flexibility	Longitudinal > 60%
Carrier	Crepped aluminium – PET compound Aluminium thickness – 20µm PET thickness – 36µm
Reinforcement	Aluminium mesh grid
Adhesive	UV stabilized and ageing resistant butyl Thickness – 2x 0.6mm Width: 295 / 445mm Liner: Film with overlap in the centre
Installation temperature	+5°C to +40°C
Temperature resistance	-30°C to +80°C
Ageing resistance	> 10 years

PACKAGING

	300mm	450mm
Code	MA42610	MA42611
Outer	4 rolls per box	4 rolls per box
Pallet	30 boxes = 120 rolls	20 boxes = 80 rolls

FLEXFAST LEAD REPLACEMENT ROLL

TECHNICAL SPECIFICATION

APPLICATIONS

Flexfast lead replacement roll can be used for numerous pitched roofing applications on new build or refurbishment projects.

- ▲ All wall abutments
- ▲ Chimney flashings
- ▲ Dormer flashings
- ▲ Around roof windows
- ▲ Solar panels

INSTALLATION INSTRUCTIONS

Make sure that the roof material and walls are dry and dust free before you start. For unstable surfaces prime first with a masonry stabilising solution or a bituminous primer.

With the protective film backing still in place, mould Flexfast into position using your hands, dressing on to the contours of the wall and roof tile profile. Flexfast is very malleable so will shape easily and will follow all the contours of the tiles ensuring a close fit.

Once dressed into a satisfactory position, remove the top protective film and press the butyl backing firmly against the wall. Remove the remaining backing paper and press into the profiles of the roof covering. Once securely pressed into position a seam roller can be used to remove any pockets of trapped air and achieve a professional finish.

Finish off with the Flexfast Aluminium Trim, position the trim over and in line with the top of the roll against the wall. Mark hole positions and drill through Flexfast and push in wall plugs, screw the trim firmly back against the wall. Seal the gap between the Flexfast Aluminium Trim and the wall with a suitable waterproof sealant.

JOINTS

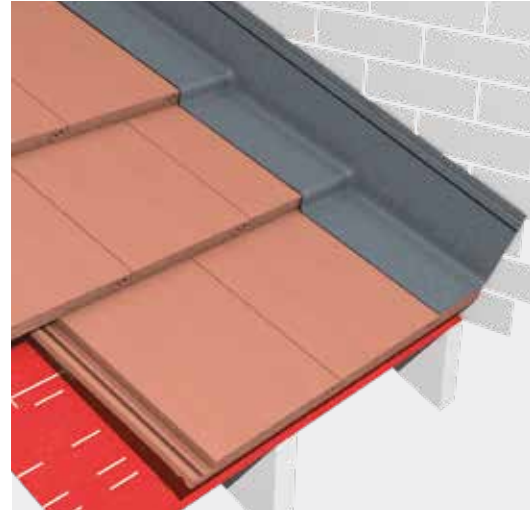
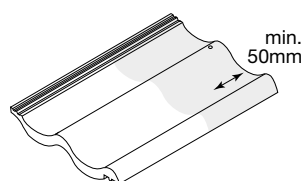
Top layer > 100mm cover

Bottom layer > 25mm return

Fold over bottom layer by min. 25mm to create a welt joint.

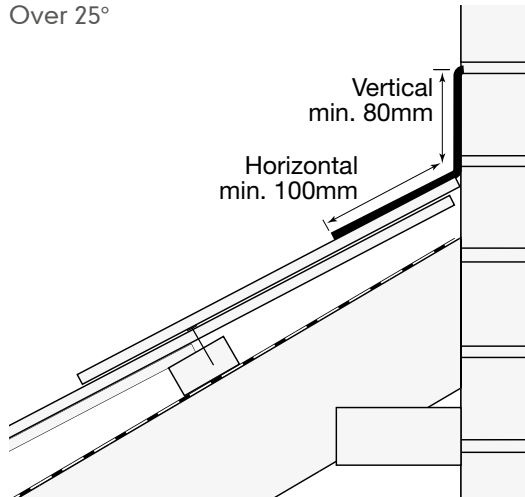
ADHESION

Within contours of tiles, ensure min. contact adhesion of 50mm.

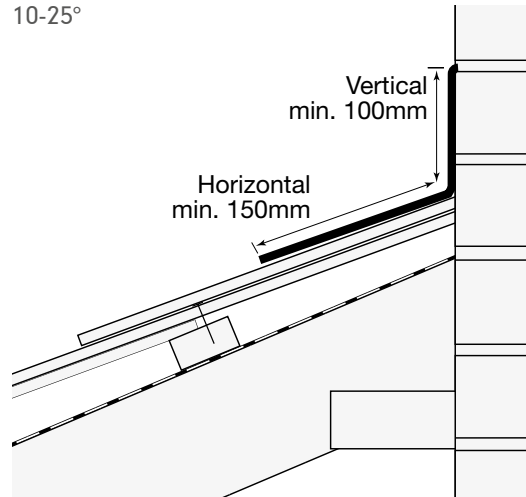


COVERAGE

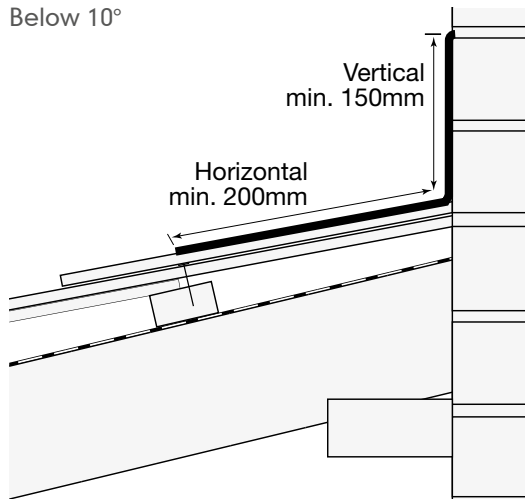
Over 25°



10-25°



Below 10°



Tell me more

Call 01283 722588

Email info@marley.co.uk

Or visit marley.co.uk/decking

Marley, Lichfield Road, Branston, Burton upon Trent, DE14 3HD

 **Marley**